

Aviation Fabricators
805 North Fourth Street
Clinton MO 64735

Document No: AF-506
Revision: (IR)
Date: July 6, 2010

INSTRUCTIONS FOR CONTINUED AIRWORTHINESS

For

Seat Recline Gear

Document No.: AF-506

Revision "IR"

Revision Date: 07/06/10

Applicable to:

**Hawker Beechcraft F33A, F33C, G33, V35A, V35B,
36, A36, 95-B55, 95-B55A, D55, D55A, E55, E55A, 56TC, A56TC,
58, 58P, 58TC, 60 Aircraft
Aircraft**

PMA Part

The information in the Instruction for Continued Airworthiness is FAA accepted material and complies with 14 CFR 23.1529, Instructions for Continued Airworthiness. It supersedes or adds to that provided in the Maintenance Manual for the appropriate Hawker Beechcraft Series Aircraft, only where covered in the

items contained herein. For limitations and procedures not contained in the Supplement, consult the Component Maintenance Manual, or other approved airplane data.

REVISION PAGE

Document Title: Instructions for Continued Airworthiness

Prepared By: Todd Pogue

Reviewed By: Brian C. Adamson

Updates to the ICA will be made by Aviation Fabricators Inc. Updates will be listed in the log of revisions and the effective pages will be listed below.

Log of Revisions				
REV. NO.	EFFECTED PAGE(S)	DESCRIPTION	DATE	APPROVED BY
IR	All	Initial Release	07/06/10	

LIST OF EFFECTIVE PAGES

Page	Date	Rev
1	07/06/10	IR
2	07/06/10	IR
3	07/06/10	IR
4	07/06/10	IR
5	07/06/10	IR
6	07/06/10	IR
7	07/06/10	IR
8	07/06/10	IR
9	07/06/10	IR

Distribution:

Per the requirement of Appendix G of 14 CFR Part 23 paragraph G23.1 (c), the changes made to the ICA by the applicant will be distributed via mail by means of paper copy.

TABLE OF CONTENTS

INSTRUCTIONS FOR CONTINUED AIRWORTHINESS	1
REVISION PAGE	2
TABLE OF CONTENTS	3
1.0 INTRODUCTION	5
2.0 INSPECTION REQUIREMENTS AND OVERHAUL SCHEDULE	7
3.0 DIMENSION AND ACCESS	7
4.0 LIFTING AND SHORING	7
5.0 LEVELING AND WEIGHING	7
6.0 TOWING AND TAXIING	7
7.0 PARKING AND MOORING	7
8.0 PLACARDS AND MARKINGS	8
9.0 SERVICE INFORMATION	8
10.0 AIRWORTHINESS LIMITATIONS	9

ABBREVIATIONS AND DEFINITIONS

Abbreviations	Definitions
AML	FAA Approved Model List (AML)
Detailed Inspection (DET)	An intensive examination of a specific item, installation or assembly to detect damage, failure or irregularity. Available lighting is normally supplemented with a direct source of good lighting at an intensity deemed appropriate. Inspection aids such as mirrors, magnifying lenses, etc. may be necessary. Surface cleaning and elaborate access procedures may be required.
FAA	Federal Aviation Administration
FAA MIDO	FAA Manufacturing Inspection District Office
General Visual Inspection (GVI)	A visual examination of an interior or exterior area, installation or assembly to detect obvious damage, failure or irregularity. This level of inspection is made from within touching distance unless otherwise specified. A mirror may be necessary to enhance visual access to all exposed surfaces in the inspection area. This level of inspection is made under normally available lighting conditions such as daylight, hangar lighting, flashlight or droplight and may require removal or opening of access panels or doors. Stands, ladders or platforms may be required to gain proximity to the area being checked.
ICA	Instructions for Continued Airworthiness
PMA	Parts Manufacturer Approval
Special Detailed Inspection (SDI)	An intensive examination of a specific item, installation, or assembly to detect damage, failure or irregularity. The examination is likely to make extensive use of specialized Inspection Techniques and/or equipment. Intricate cleaning and substantial access or disassembly procedure may be required.
STC	Supplemental Type Certificate

1.0 INTRODUCTION

The purpose of this Maintenance Manual Supplement and Instructions for Continued Airworthiness (ICA) is to provide the maintenance technician with the information necessary to ensure the continued airworthiness of the Aviation Fabricators Seat Recline Gear installation, per installation number 18-0489, when installed in accordance with Aviation Fabricators design data included on drawing D-10653.

Modifications to an aircraft obligates the operator to include the maintenance information provided by this document into the operators aircraft Maintenance Manual and operator's aircraft scheduled maintenance program. This document defines supplementary maintenance operations and frequencies recommended by Aviation Fabricators Inc., to ensure the aircraft's airworthiness.

The information contained herein addresses the requirements specified in 14 CFR 23.1529, Instructions for Continued Airworthiness and supplements the basic Airplane Maintenance Manual only in those areas listed as pertains to the installation of the seat recline gear, as installed per the Aviation Fabricator drawing D-10653. For limitations and procedures not contained in this supplement, consult the basic Airplane Maintenance Manual.

DATA

All information to support the continued airworthiness of this modification is contained in:

Installation: Drawing D-10653

Parts: Refer to p/n 18-0489 per drawing D-10535

The seat recline gear is an aluminum part machined identical to the OEM part and installed in the exact same manner.

Design Change Control

All data and changes to the parts and assemblies will be tracked per drawings D-10535 Rev B and D-10653 Rev (IR) or later approved revisions.

Applicable Aircraft

Hawker Beechcraft F33A, F33C, G33, V35A, V35B, 36, A36, 95-B55, 95-B55A, D55, D55A, E55, E55A, 56TC, A56TC, 58, 58P, 58TC, 60 Aircraft

Seat Recline Gear Installation
P/N 18-0489

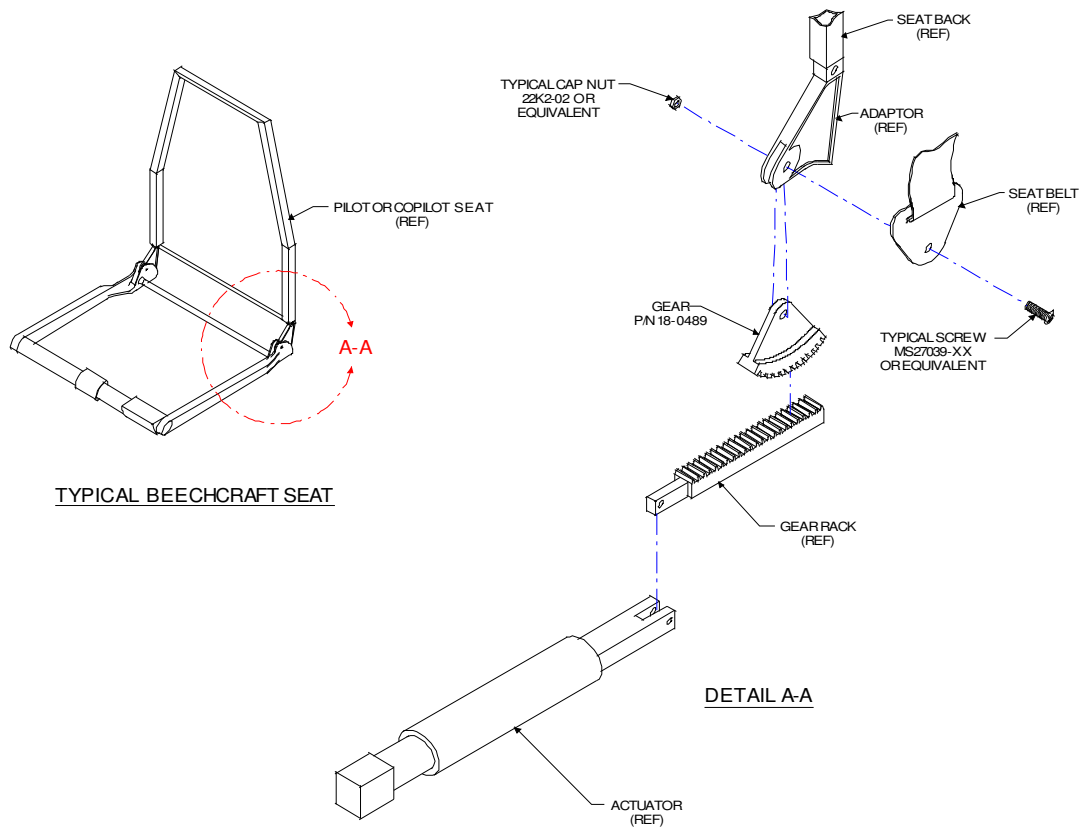


Figure 1.0A

2.0 INSPECTION REQUIREMENTS AND OVERHAUL SCHEDULE

1. To comply with 14 CFR 23.1529, inspect the seat recline gear per the following table
2. Inspection Time Limit for the seat recline gear installations:
 Inspect per seat time schedule of 800 hours or every 24 months.
3. Recommended Overhaul Periods
 No additional overhaul time limitations.

Task Code			Schedule	Date	Mech	Insp
AFI-100	a.	Check cracks and hole enlargement around attaching screw.				
AFI-101	b.	Check cracks, breaks, or damage to teeth of the gear.				

3.0 DIMENSION AND ACCESS

No change.

4.0 LIFTING AND SHORING

No change.

5.0 LEVELING AND WEIGHING

No change.

6.0 TOWING AND TAXIING

No change.

7.0 PARKING AND MOORING

No change.

8.0 PLACARDS AND MARKINGS

No change.

9.0 SERVICE INFORMATION

Maintenance Instructions:

If any damage is found during inspection to the seat assembly, contact Aviation Fabricators for replacement or repair.

Removal and Installation of the Seat Recline Gear:

1. Remove attaching screw, washers, and nut and take recline gear from its position on the seat assembly.
2. Install by placing recline gear in correct position and attach using screw, washers, and nut.

10.0 AIRWORTHINESS LIMITATIONS

The information contained herein supplements the basic Maintenance Manuals only in those areas listed, when the aircraft is modified in accordance with Aviation Fabricators drawing D-10653 Rev (-) or later approved revision. For limitations and procedures not contained in this supplement, consult the basic Airplane Maintenance Manuals.

The Airworthiness Limitations section is FAA approved and specifies maintenance required under Sec. 43.16 and 91.403 of the Federal Aviation Regulations unless an alternative program has been FAA approved.

AIRWORTHINESS LIMITATIONS - LOG OF REVISIONS			
REV.	EFFECTED PAGE (s)	DESCRIPTION of REVISION	DATE
(IR)	All	Initial Release	07/06/2010

AIRWORTHINESS LIMITATIONS

There are no Airworthiness Limitations to the aircraft with the addition of the seat recline gear installed per D-10653.